

# ABLOY® EXIT

*For safe exits*



# ABLOY® EXIT - SAFE SOLUTIONS FOR ESCAPE ROUTES

## EUROPEAN STANDARDS FOR PANIC AND EMERGENCY ESCAPE ROUTES

European Standards EN 1125 and EN 179 specify the requirements for locking and architectural hardware solutions used in panic exit devices in buildings - the aim is to guarantee an immediate escape route in emergency situations. As the requirements of the standards apply to the whole of a building's door environment, all the components used should be tested as a complete unit and their operation should be checked at the specified periods in accordance with the manufacturer's instructions.

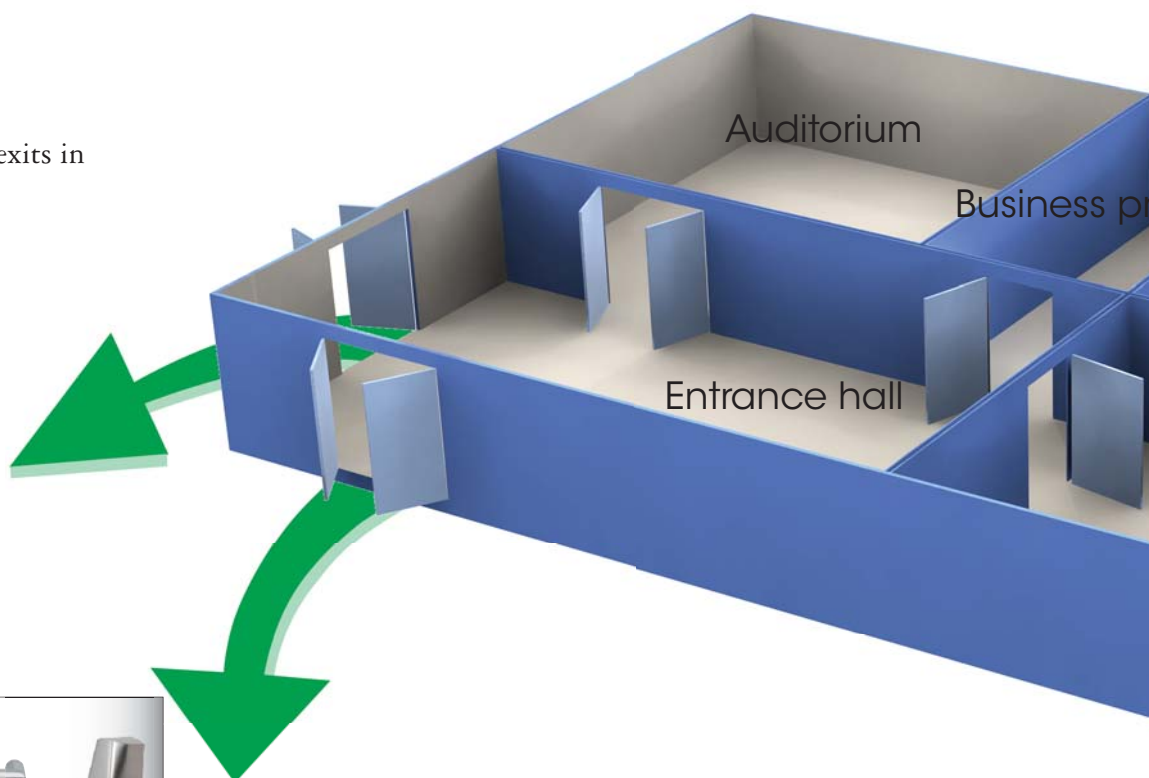
Locking and architectural hardware for use on panic exits in accordance with EN 1125



Panic bar - Door pull



Panic bar - Handle



### EN 1125 – PANIC EXITS (bars indicating the direction of exit)

Door environments complying with this European Standard employ locking and architectural hardware solutions that fulfil the requirements specified in EN 1125 and allow quick exits in panic situations.

Devices complying with the standard are primarily intended for buildings used by the public in which many people can be present at the same time but none of them have either prior knowledge of the available exits or an understanding of how the locking devices function.

Typical buildings are

- Theatres
- Shopping malls
- Schools
- Hospitals
- Exhibition and sport venues

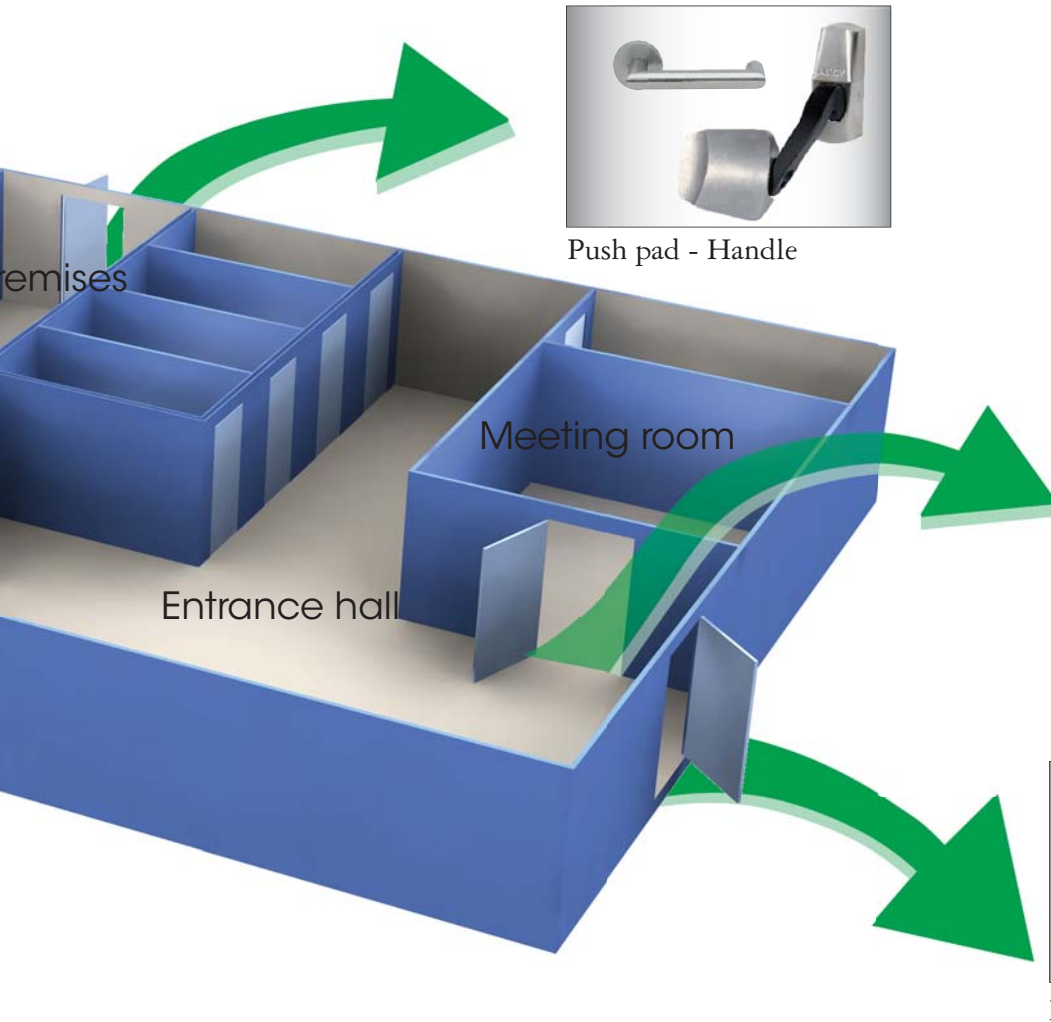
Signs indicating compliance with the panic exit standards



Panic exit



Emergency exit



Push pad - Handle

Locking and architectural hardware for use on emergency exits in accordance with EN 179



Push pad - Door pull



Handle - Handle

EN 179 - EMERGENCY EXITS (door handles or push pads indicating the direction of exit)

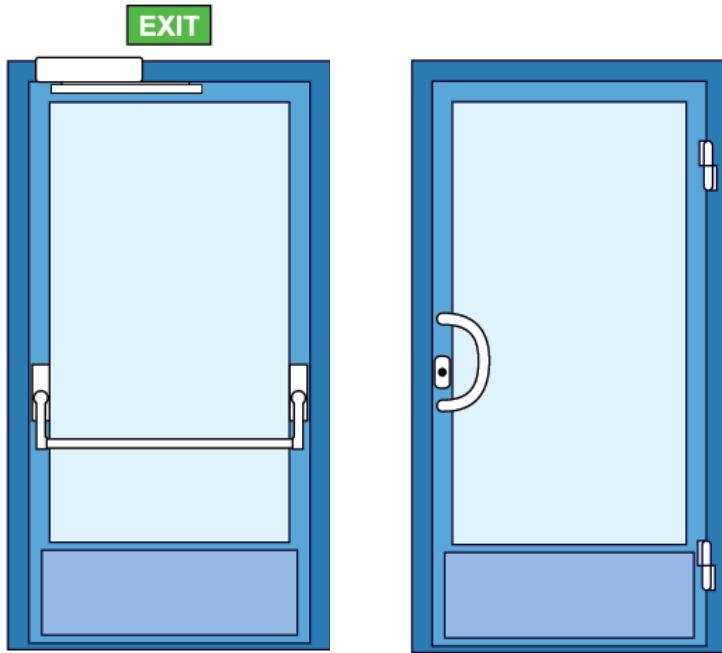
To comply with this European Standard, door environments must be equipped with single-action opening mechanism and architectural hardware solutions that fulfil the requirements specified in EN 179.

Door environments complying with the standard are primarily intended for interior spaces and buildings where small numbers of people are present but only some of them have adequate local knowledge concerning the available exits and how the locking devices function.

Typical buildings are

- Offices
- Meeting rooms
- Classrooms

## EN 1125 - PANIC EXIT - TYPICAL SOLUTION



- Fire door or other type of single-leaf door
- Mechanical or electromechanical lock
- Panic bar
- Door closer or automatic door operator

Fire doors must close and latch in the event of a fire. Locking devices, door closers, automatic door operators and fire-door closing systems used on fire doors must be type approved.

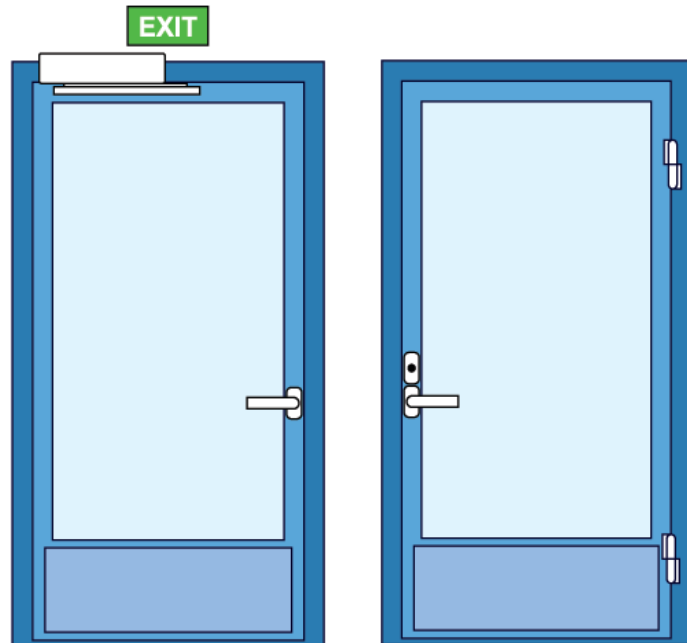
A panic bar must be installed on the inside to guarantee that the door can be used as an escape route. The external hardware employed - lock cylinder, handle or door pull - depends on the specific application.

## EN 179 - EMERGENCY EXIT - TYPICAL SOLUTION

- Fire door or other type of single-leaf door
- Mechanical or electromechanical lock
- Handle or push pad
- Door closer or automatic door operator

Fire doors must close and latch in the event of a fire. Locking devices, door closers, automatic door operators and fire-door closing systems used on fire doors must be type approved.

A handle or a push pad is used inside to guarantee exit. The external hardware employed - lock cylinder, handle or door pull - depends on the specific application.



[www.abloy.com](http://www.abloy.com)

Abloy Oy  
 Wahlforssinkatu 20  
 P.O.Box 108  
 FI-80101 JOENSUU  
 FINLAND  
 Tel. +358 20 599 2501  
 Fax +358 20 599 2209

